

# Detailed Mapping and Architectural Design in AlphaWorld



Figure 4.21 - page one

[Run as double page spread]

[Location: 1635N 2397W]



The 'colosseo' monument built by a tourist in October 1996 (above) and the Greatlight Keep at the heart of a large circular structure (right). Built by user LitteBull in August 1996.



[Location: 202S 105W]

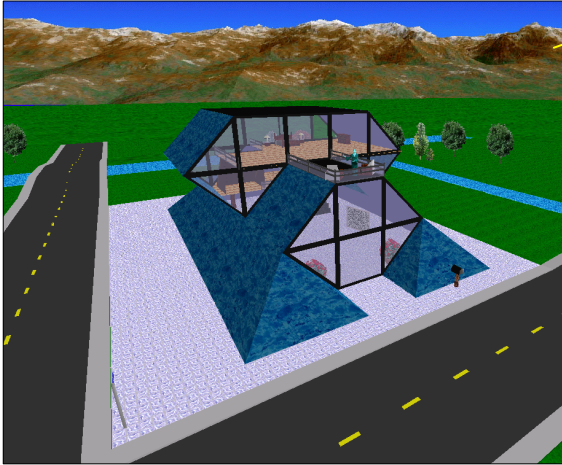


Two view of mock tudor suburban detached house at '77 Rockinghorse Way'. Built by user Tranthum in December 1996. Interior is empty.

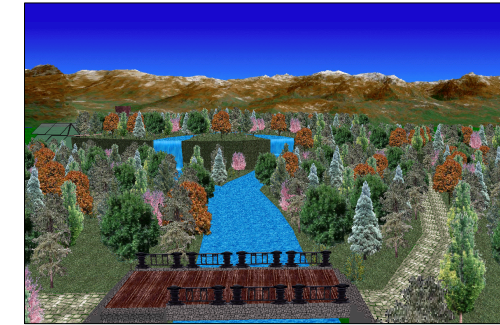
# [Run as double page spread]

Figure 4.21 - page two

[Location: 446S 482E]



A compact futurist house designed and built by Dougie in November 1996.



[Location: 598S 565E]

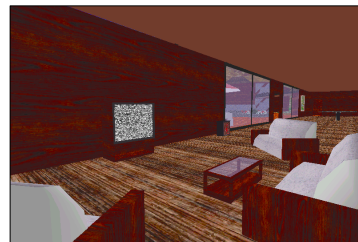


The great AW forest built between November 1995 and spring 1996 by LittleBull with a long meandering river. It has over a million objects. There is also a small monumental garden on the edge the forest (shown below) also built by LittleBull in March 1996.

[Location: 597S 465E]



'Pimlico Palace' large modern country house built by user KomodoDragon in March 1997. Below is part of the minimalist of interior decor.



[Location: 635S 566E]