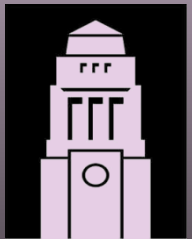




# DIGITAL GEOGRAPHY *in a* WEB 2.0 WORLD



UNIVERSITY OF  
LEEDS



## WEDNESDAY 20 FEBRUARY 2008

**WEDNESDAY 20 FEBRUARY 2008 @ The Barbican**

# **GMapCreator and MapTube**

Web-based mapping services for sharing and visualizing geographic information.

Richard Milton & Andy Hudson-Smith

University College London

<http://www.casa.ucl.ac.uk>

# Software tools developed and released



1. Image Cutter



2. Photo Overlay Creator



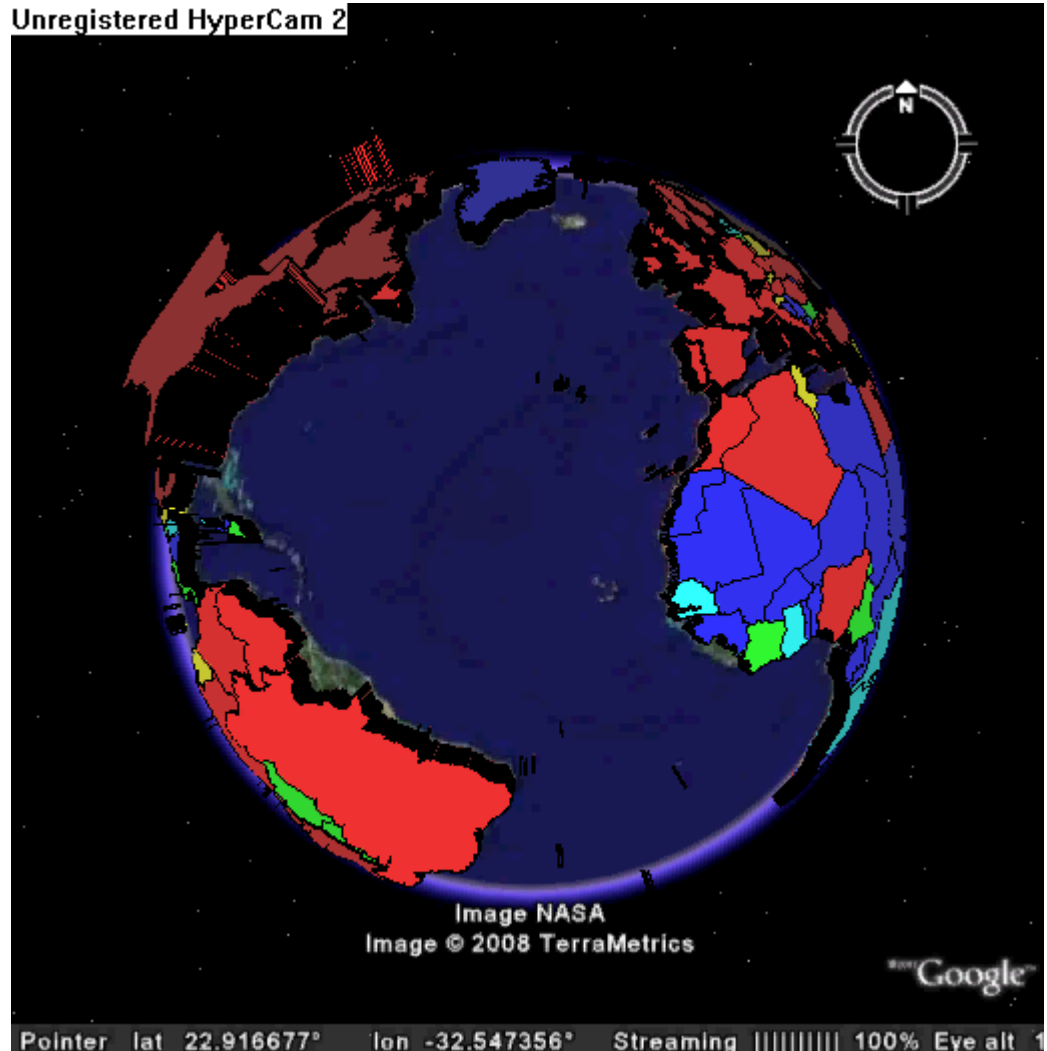
3. GMapCreator

Released today:



To be released:

5. Google Earth Creator

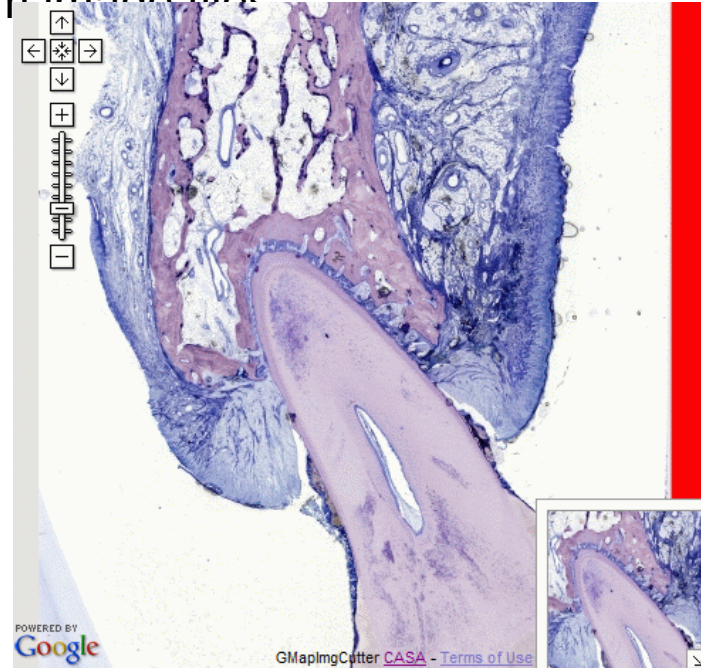


# Image Cutter

Generates Google Maps web sites from image files



Union Square Building

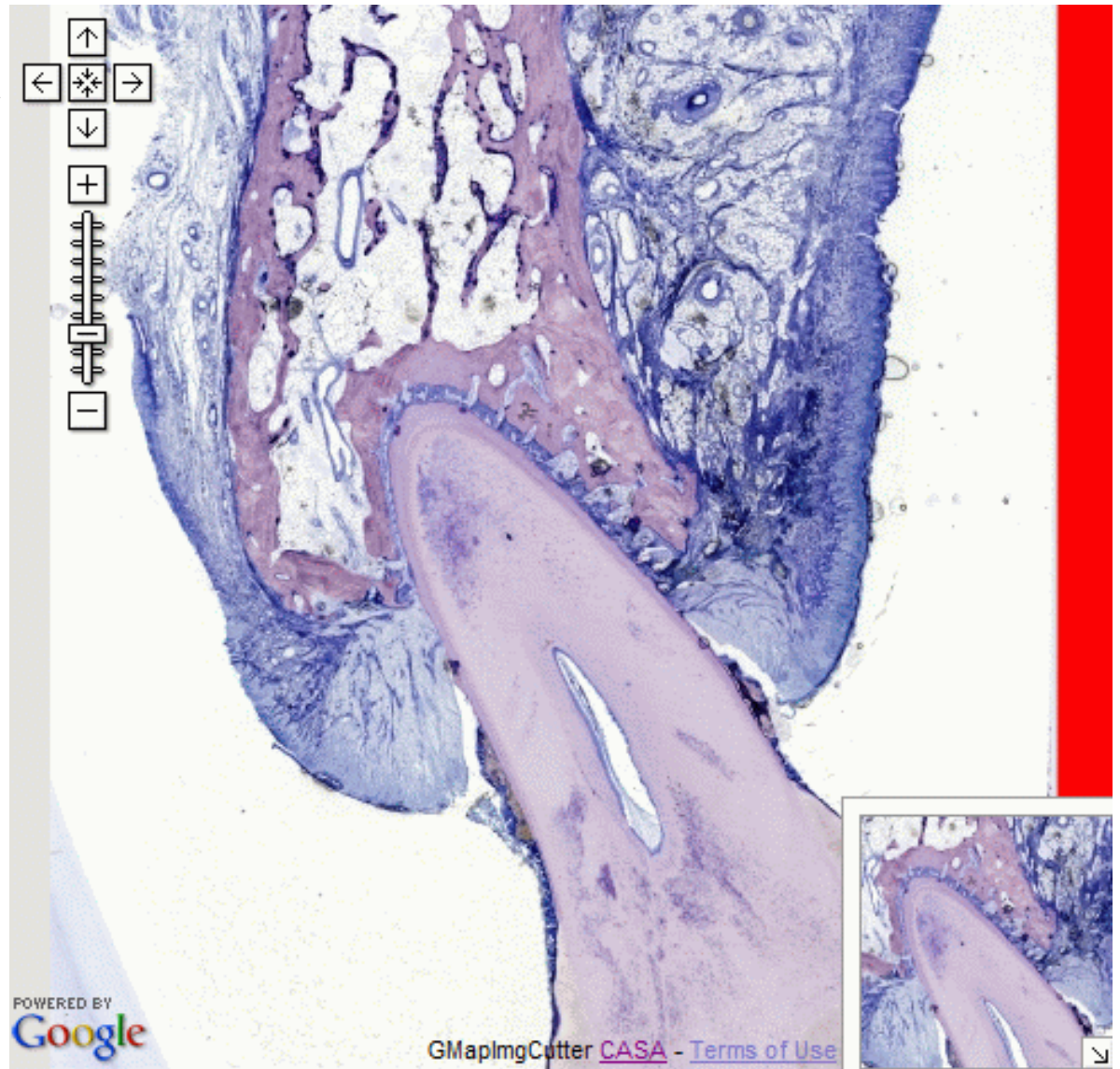


Microscope Image of a Tooth

# Image Cutter

## Microscopic Image of a Tooth

[click on the image to see a demo] →

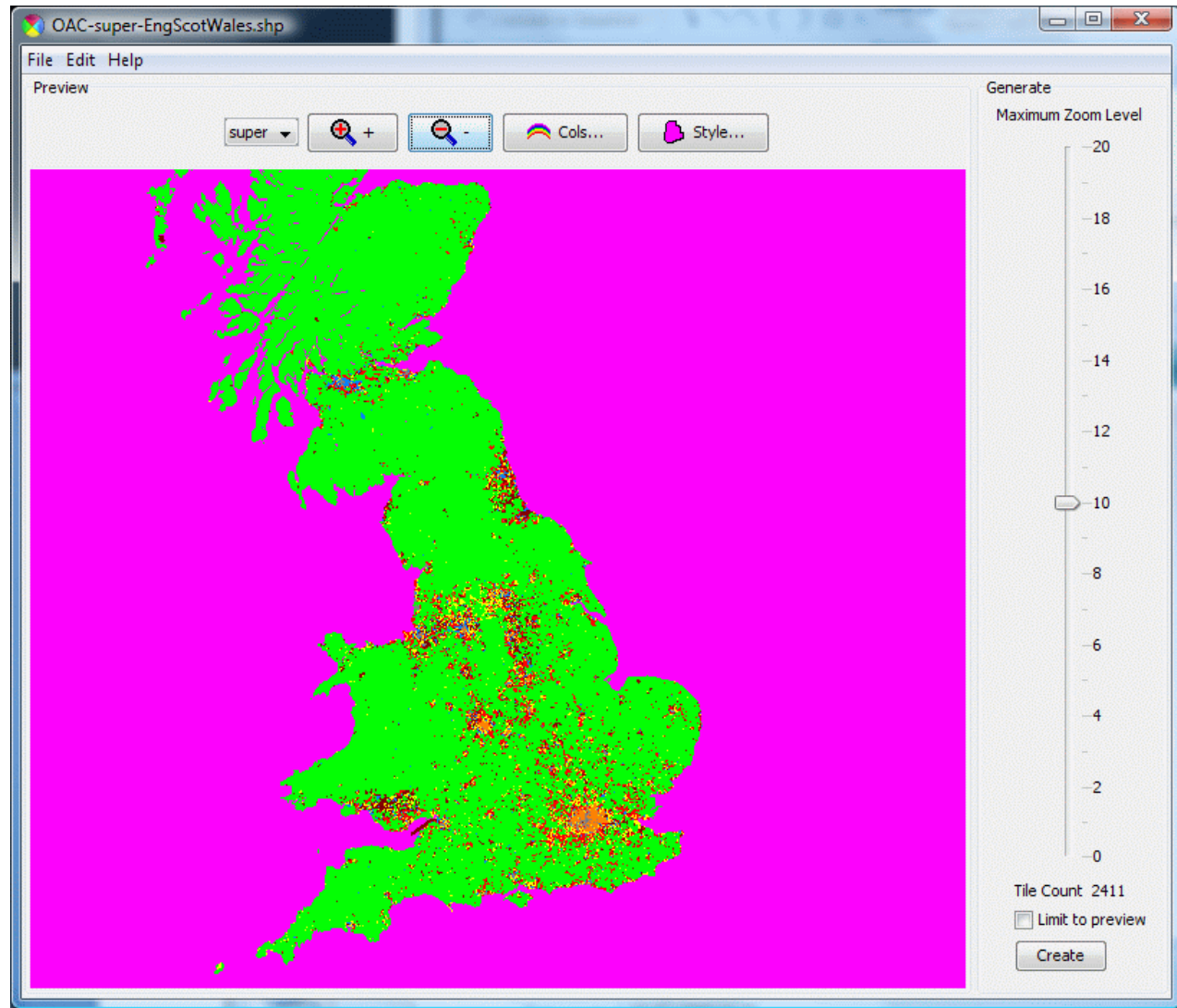


# GMapCreator

The Google Map Creator creates Google Maps websites from thematic data contained in shapefiles.

## DEMO

[Please click on the picture to see a demo] →



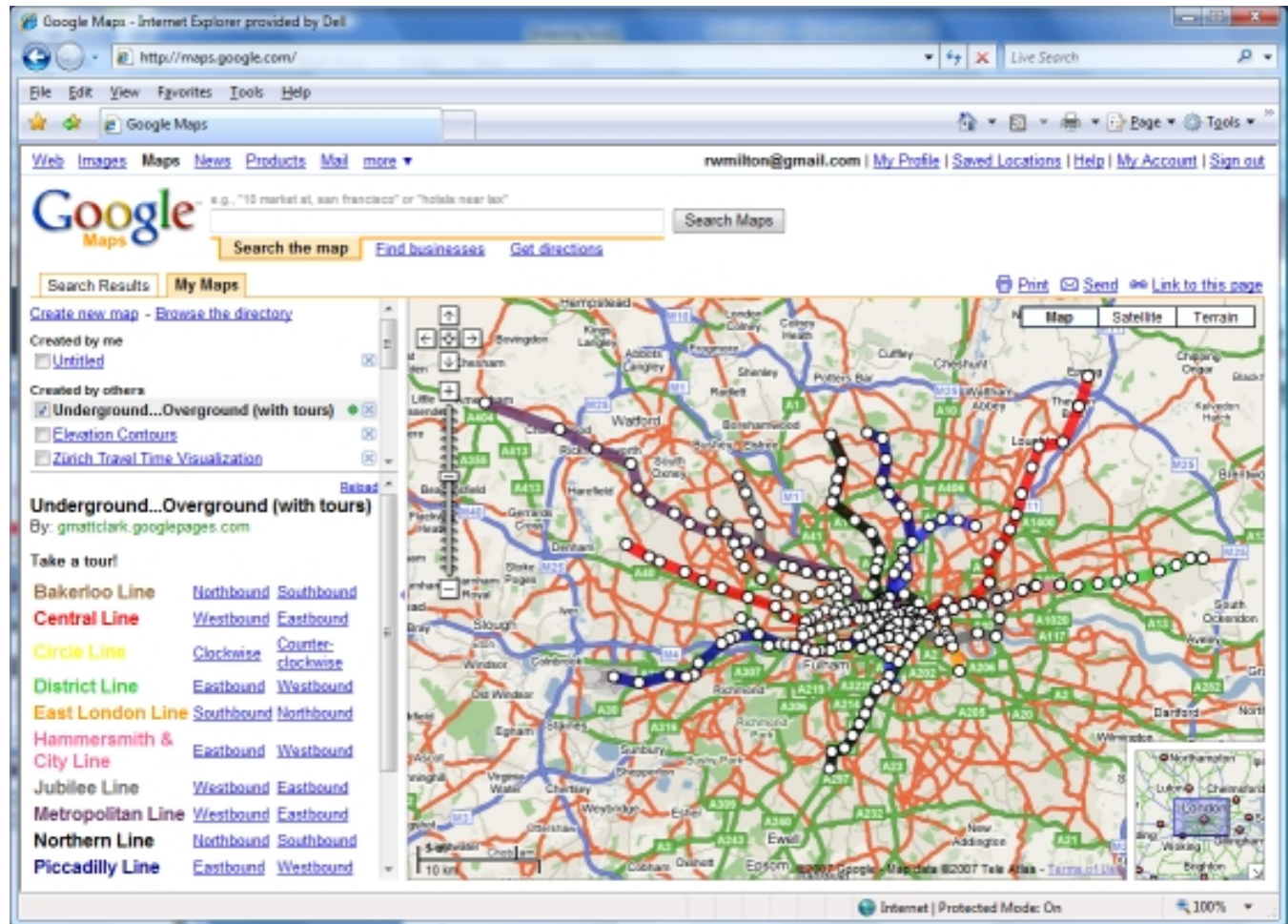
# Moving from Single Maps to Shared Maps

A Google Mapplet showing the London Tube Map.

Mapplets use KML and Javascript. The data is stored on the web server and downloaded.

KML files are limited to 1MB.

The Google Earth Creator can make the KML files.



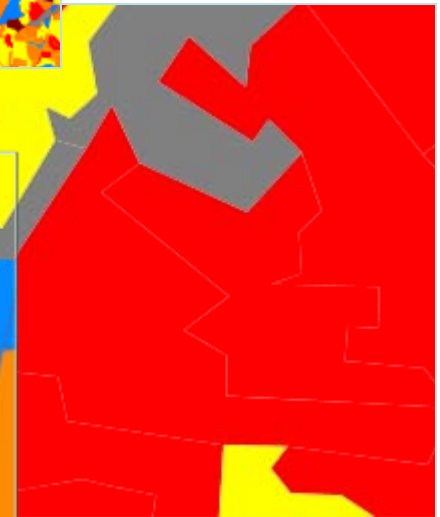
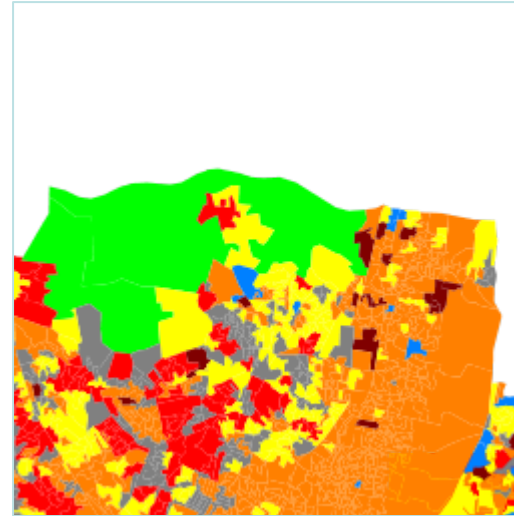
# MapTube

MapTube takes a tile based approach to allow it to handle large amounts of data.

Maps are distributed across the Internet and transferred as image tiles.

A MapTube map is defined as a colour scale, geographic extent and tile URL.

<http://www.maptube.org/>





# Maptube Demo

The screenshot shows the Maptube website interface. At the top, there is a navigation bar with the Maptube logo and the tagline "a place to put maps". Below this is a "Popular Maps" section featuring a grid of 12 map thumbnails, each with a title and a brief description. The maps include:

- Den Vickere' Output Area Classification (OAC)**: Output Area Classification for England, Scotland and Wales. Viewed 204 times.
- London Tube Map**: A map of the London Underground with geographically correct station positions. Viewed 32 times.
- IMD Total**: IMD Total. Viewed 27 times.
- TFL Travelcard Zones**: Rough approximation of the tube travel zones in London. Viewed 26 times.
- Mouse Prices**: House Price Data. Viewed 215 times.
- Remoteness Index Canada**: Remoteness Index for Canada. Viewed 42 times.
- London Output Area Classification**: London Output Area Classification. Viewed 16 times.
- e-Society**: The e-Society geodemographic classification is based on levels of awareness of information and communications technologies, usage patterns, and attitudes to their efforts.
- Post Office Locations**: The locations of post offices in England, Scotland and Wales. Viewed 47 times.
- English Population**: The percentage of the population in London who are English in origin. Viewed 41 times.
- eSociety Postcode Points**: Coloured points corresponding to the eSociety classification. Viewed 236 times.
- Output Area Classification**: Output Area Classification. Viewed 17 times.

# The Future

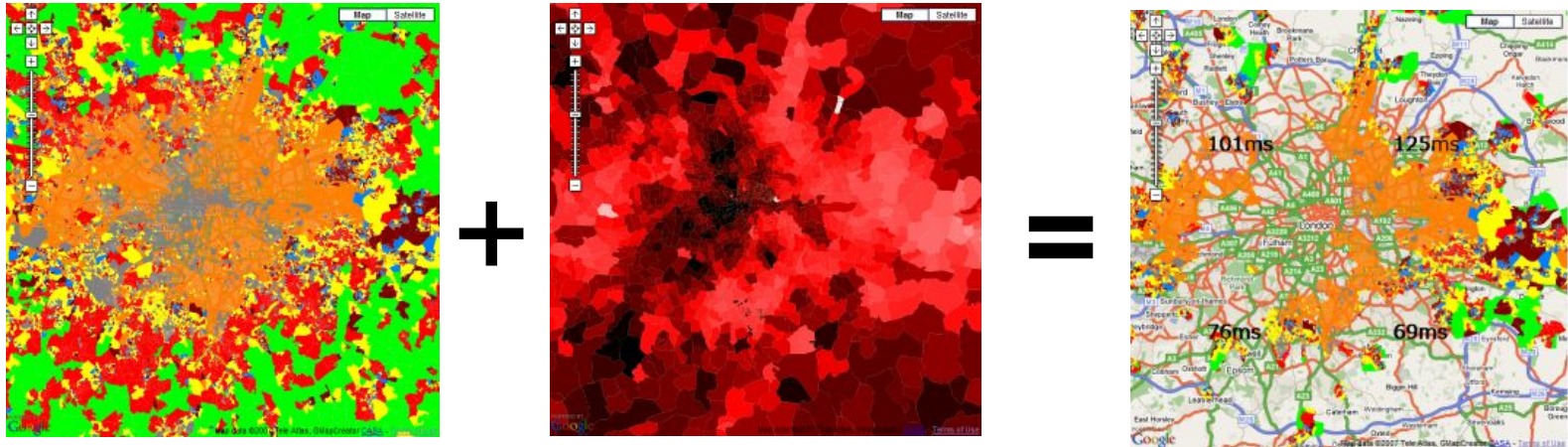
The Google Earth Creator, Mapplets and overlays on MapTube?



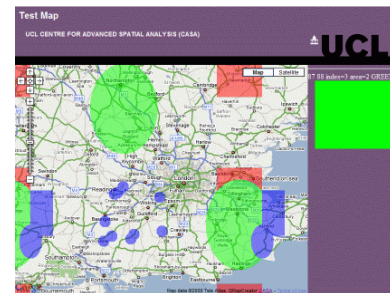
# Moving Towards Web GIS...

More advanced visualisation of tile layers

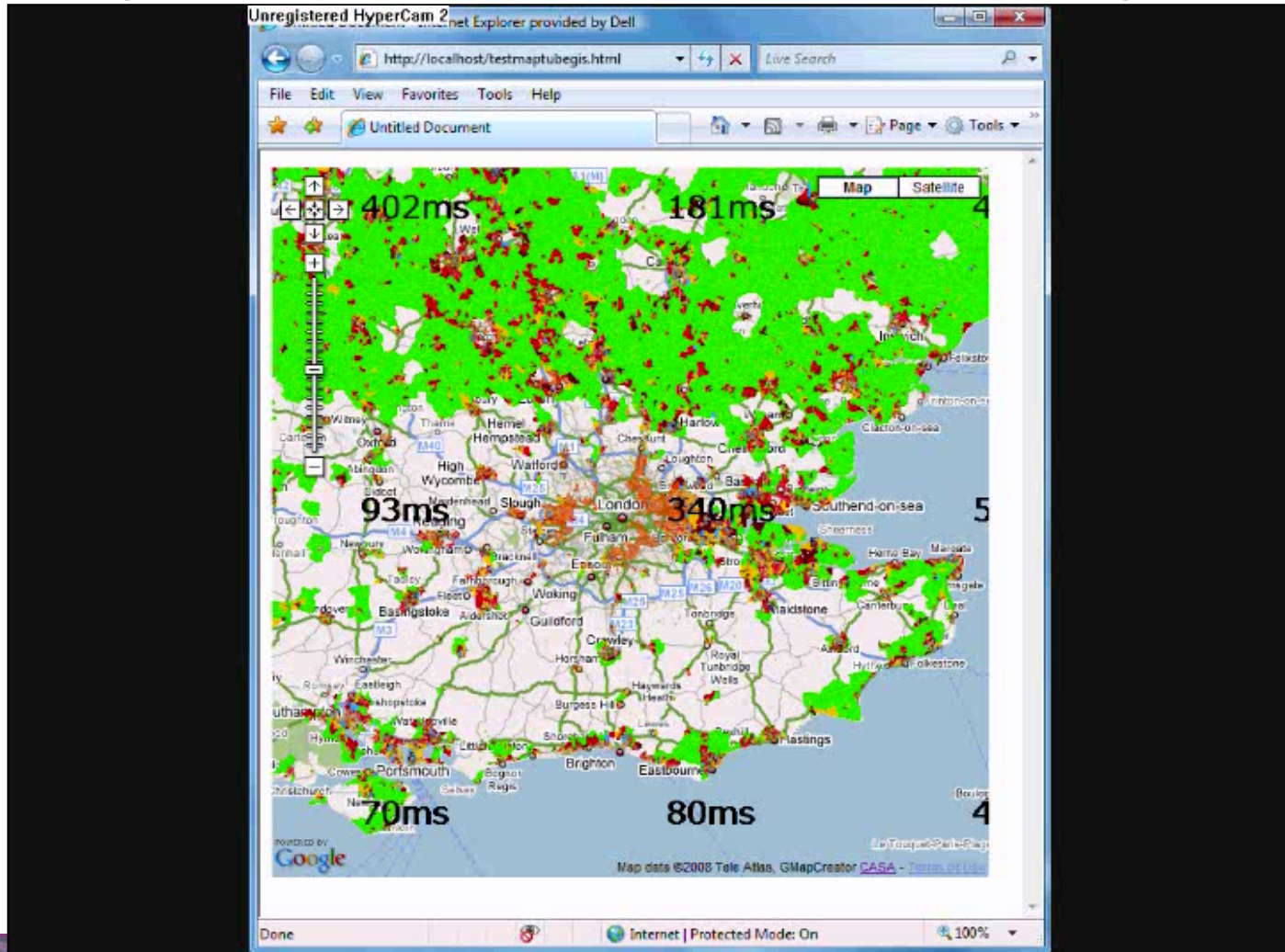
(OAC where house prices are less than 300,000 pounds).



Mouse over and interaction with the data

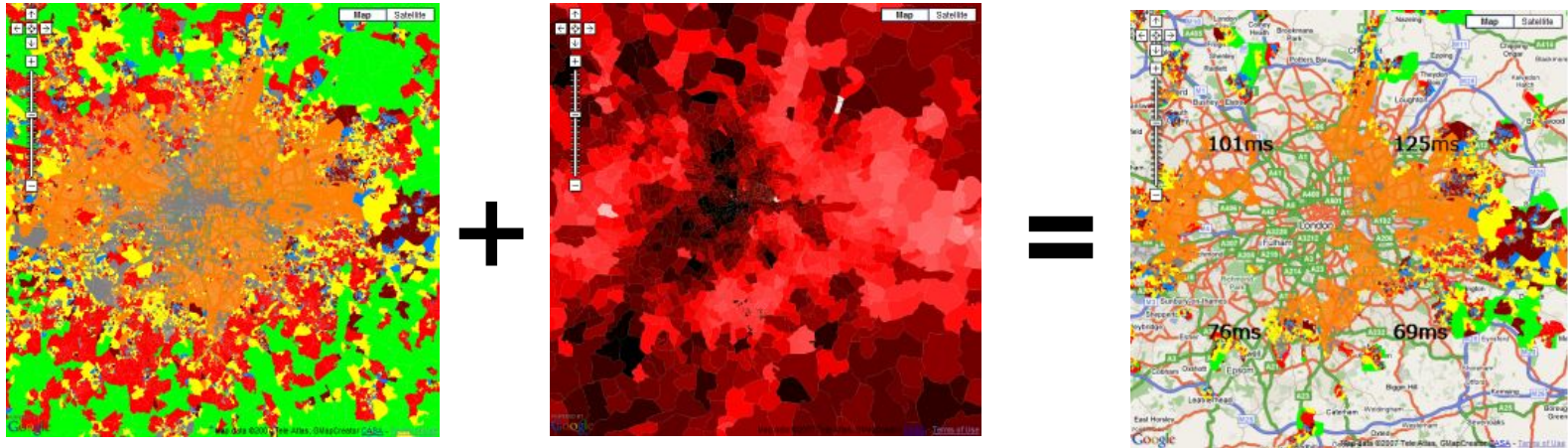


# Moving Towards Web GIS... (more advanced visualisation)

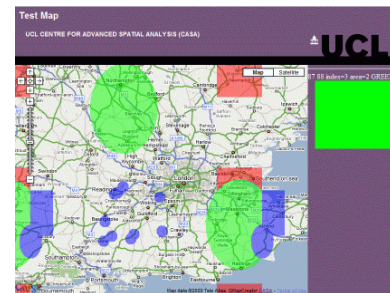


# Moving Towards Web GIS...

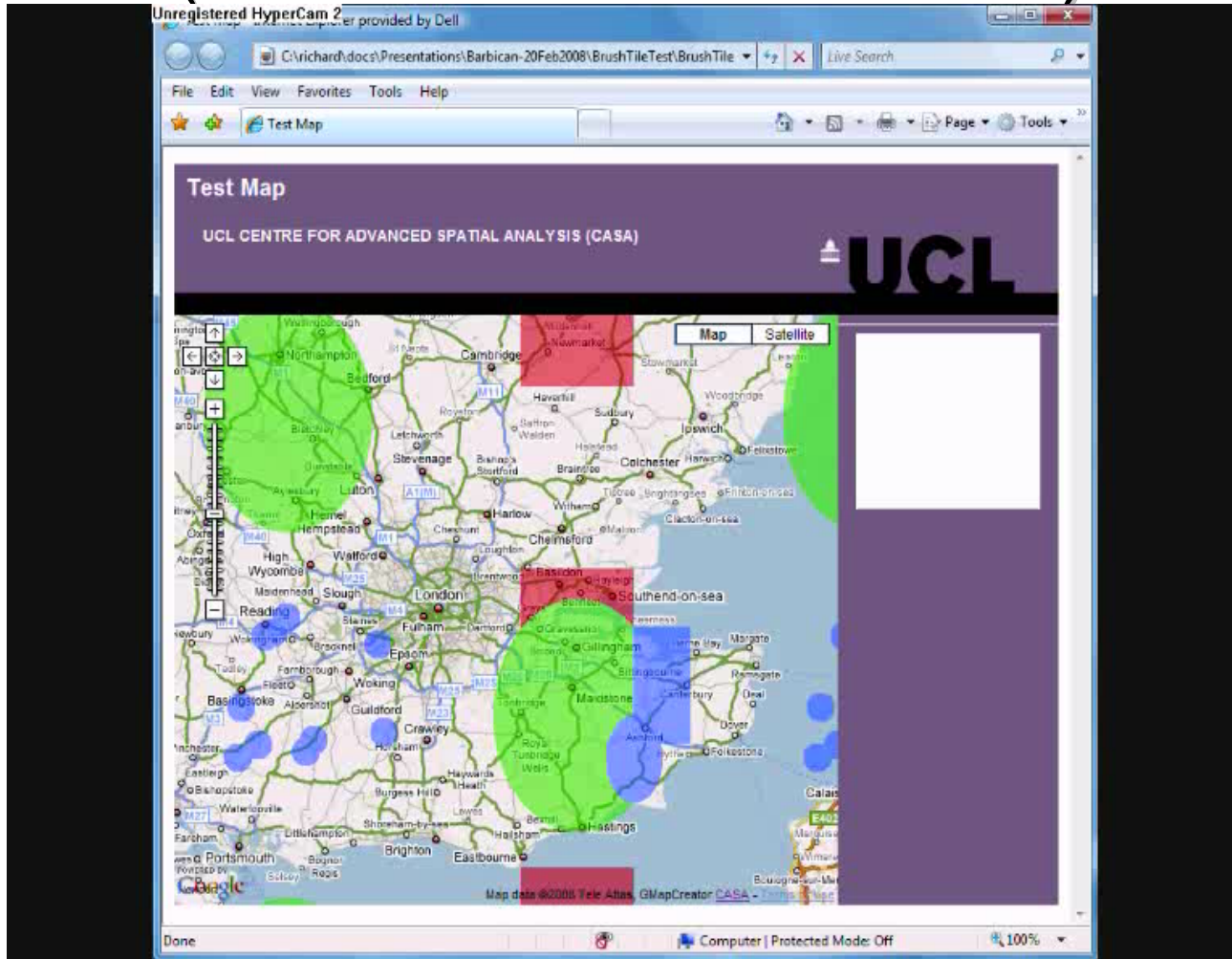
More advanced visualisation of tile layers  
(OAC where house prices are less than 300,000 pounds).



Mouse over and interaction with the data

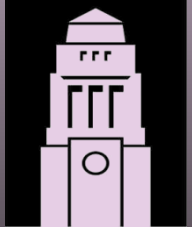


# Moving Towards Web GIS... (interaction with the data)





# DIGITAL GEOGRAPHY *in a* WEB 2.0 WORLD



UNIVERSITY OF  
LEEDS



## WEDNESDAY 20 FEBRUARY 2008